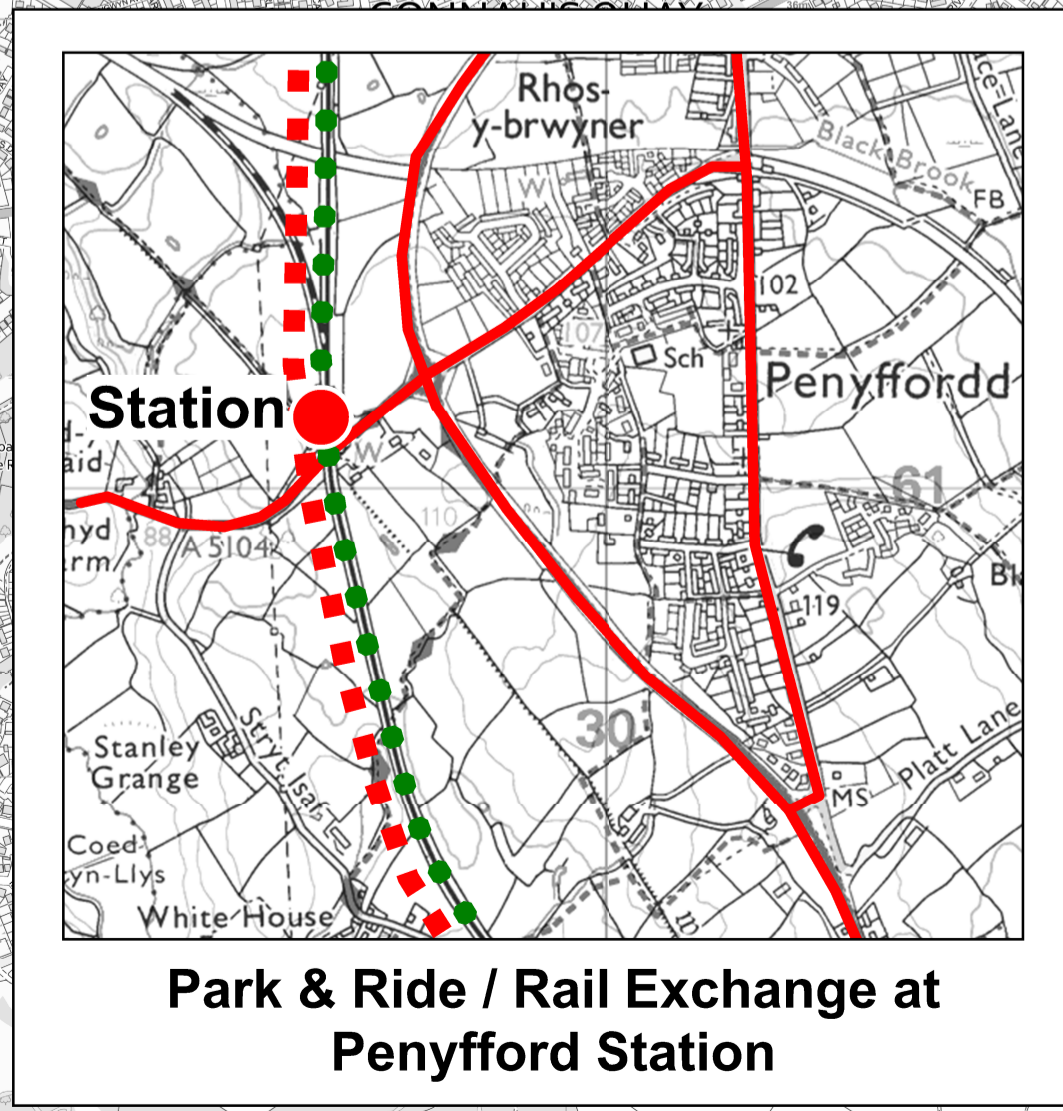
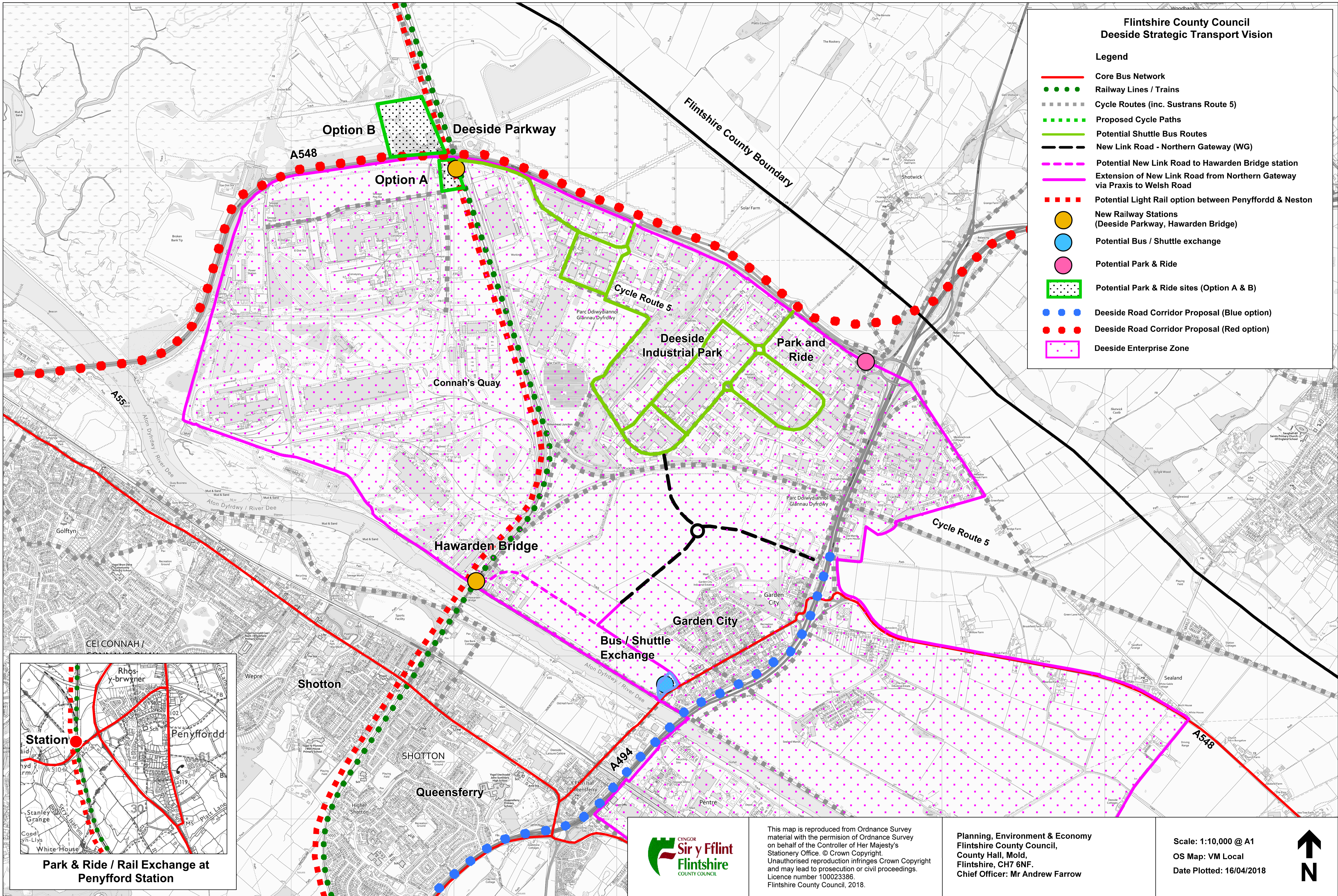


**Flintshire County Council  
Deeside Strategic Transport Vision**

**Legend**

- Core Bus Network
- Railway Lines / Trains
- - - - Cycle Routes (inc. Sustrans Route 5)
- - - - Proposed Cycle Paths
- Potential Shuttle Bus Routes
- - - - New Link Road - Northern Gateway (WG)
- - - - Potential New Link Road to Hawarden Bridge station
- Extension of New Link Road from Northern Gateway via Praxis to Welsh Road
- ■ ■ ■ Potential Light Rail option between Penyffordd & Neston
- New Railway Stations (Deeside Parkway, Hawarden Bridge)
- Potential Bus / Shuttle exchange
- Potential Park & Ride
- Potential Park & Ride sites (Option A & B)
- Deeside Road Corridor Proposal (Blue option)
- Deeside Road Corridor Proposal (Red option)
- Deeside Enterprise Zone



This map is reproduced from Ordnance Survey material with the permission of Ordnance Survey on behalf of the Controller of Her Majesty's Stationery Office. © Crown Copyright. Unauthorised reproduction infringes Crown Copyright and may lead to prosecution or civil proceedings. Licence number 100023386. Flintshire County Council, 2018.

Planning, Environment & Economy  
Flintshire County Council,  
County Hall, Mold,  
Flintshire, CH7 6NF.  
Chief Officer: Mr Andrew Farrow

Scale: 1:10,000 @ A1  
OS Map: VM Local  
Date Plotted: 16/04/2018

